

Please Print

Officer's Full Name: _____ Badge No.: _____

Department: _____ Telephone No.: () _____

Shipping Address: _____

City: _____ State: _____ Zip: _____ Distributor's Name _____

Measured By: _____ Date Of Measuring _____

BALLISTIC/STAB TYPE

NIJ-06:

- Summit SM01
- Summit MN01
- Other _____

NIJ 2005 IR:

- Summit
- Monarch 329
- Other _____

NIJ-06/0115.00:

- Prism MT21
- Prism MT01

NIJ 2005 IR/0115.00/

- Summit MT

Threat Level: IIA II IIIA

Spike: Spike 1(PS-1.0) Spike 2 (PS-2.2) Spike 3 (PS-3.0)

Comments: _____

CARRIER INFORMATION

- Apex
- Apex FRP*
- SPA+
- SPA+ FRP*

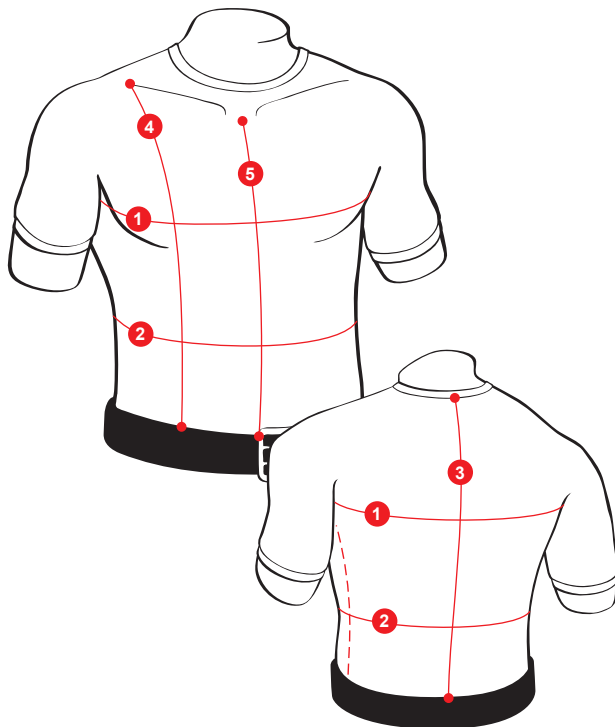
* FRP indicates carrier is equipped with front and rear plate pockets.

- Carrier** White Tan Navy Black
Colors: Brown Olive Gray Other _____

COVERAGE TYPE

- Standard
- Shooter's Cut
- Max Coverage

If no coverage type has been selected, we will use "standard" coverage as the default coverage type.



HEIGHT: _____ ft. _____ ins. **WEIGHT:** _____ lbs.

All measurements listed refer to illustration

THE FOLLOWING MEASUREMENTS SHOULD BE TAKEN STANDING

1 FULL CHEST MEASUREMENT
 Use cloth tape. Measure around the back, directly under arm pits, meeting across center chest front. _____ ins.

2 TOTAL WAIST MEASUREMENT
 Use this Total Waist Measurement for selecting a Front/Back Panel Width below. Measure waist at widest circumference in between the chest and the top of the duty belt. Add the desired overlap to the waist measurement to achieve "total waist" measurement.
 ■ Butt Fit – add 1" to the waist measurement
 ■ 1" Overlap – add 3" to the waist measurement
 ■ 2" Overlap – add 5" to the waist measurement

WAIST _____ + OVERLAP _____ = TOTAL WAIST _____ ins.

3 BACK LENGTH MEASUREMENT
 Use this Back Length Measurement for selecting a Back Panel Length below. Identify the bottom edge of the shirt collar. Measure from the bottom edge of the shirt collar to the top of the duty belt. Multiply that measurement by .80 (80%).

BACK MEASUREMENT _____ x .80 = BACK LENGTH _____ ins.

THE FOLLOWING MEASUREMENTS SHOULD BE TAKEN SEATED

4 FRONT SIDE LENGTH MEASUREMENT
 Use this Front Side Length Measurement for selecting a Front Panel Length below. Use cloth tape. Place tape at top edge of clavicle bone and measure straight down to top edge of duty belt. Subtract 1" from this measurement.

FRONT SIDE _____ - 1" = FRONT SIDE LENGTH _____ ins.

5 FRONT CENTER LENGTH MEASUREMENT
 Identify the clavicle notch. Measure from the base of the clavicle notch to the top of the duty belt. Subtract 1" from this measurement.

FRONT CENTER _____ - 1" = FRONT CENTER LENGTH _____ ins.

PANEL CONFIGURATION

SIZES: NOTE: Front panel must be as wide or wider than back panel to allow for wrap-around coverage.

FRONT PANEL WIDTHS: 12 14 17 20 22 25 28 30 35 40 / **FRONT PANEL LENGTHS:** 10 11 12 13 14 15 16 17 18 19 20 21 22 23
BACK PANEL WIDTHS: 12 14 17 20 22 25 28 30 35 40 / **BACK PANEL LENGTHS:** 10 11 12 13 14 15 16 17 18 19 20 21 22 23

VEST SIZE / /

FRONT PANEL WIDTH FRONT PANEL LENGTH BACK PANEL WIDTH BACK PANEL LENGTH

