

Please Print

Officer's Full Name: \_\_\_\_\_ Badge No.: \_\_\_\_\_

Department: \_\_\_\_\_ Telephone No.: ( ) \_\_\_\_\_

Shipping Address: \_\_\_\_\_

City: \_\_\_\_\_ State: \_\_\_\_\_ Zip: \_\_\_\_\_ Distributor's Name \_\_\_\_\_

Measured By: \_\_\_\_\_ Date Of Measuring \_\_\_\_\_

### BALLISTIC/STAB TYPE

**NIJ-06:**

- Summit SM01     Monarch MR01  
 Summit MN01     Other \_\_\_\_\_

**Threat Level:**  IIA     II     IIIA

**NIJ 2005 IR:**

- Summit  
 Monarch 329  
 Other \_\_\_\_\_

**NIJ-06/0115.00:**

- Prism MT21  
 Prism MT01

**NIJ 2005 IR/0115.00:**

- Summit MT

**Spike:**  Spike 1(PS-1.0)     Spike 2 (PS-2.2)     Spike 3 (PS-3.0)

### COMMENTS

\_\_\_\_\_  
 \_\_\_\_\_  
 \_\_\_\_\_  
 \_\_\_\_\_

### CARRIER INFORMATION

- Apex     Apex FRP\*     SPA+     SPA+ FRP\*  
\* FRP indicates carrier is equipped with front and rear plate pockets.

**Carrier**     White     Tan     Navy     Black  
**Colors:**     Brown     Olive     Gray     Other \_\_\_\_\_

### COVERAGE TYPE

- Standard     Shooter's Cut     Max Coverage

*If no coverage type has been selected, we will use "standard" coverage as the default coverage type.*

**HEIGHT:** \_\_\_\_\_ ft. \_\_\_\_\_ ins.    **WEIGHT:** \_\_\_\_\_ lbs.

All measurements listed refer to illustration

### THE FOLLOWING MEASUREMENTS SHOULD BE TAKEN STANDING

**1 FULL CHEST MEASUREMENT**  
 Use cloth tape. Measure around the back, directly under arm pits, meeting across center chest front. \_\_\_\_\_ ins.

**2 TOTAL WAIST MEASUREMENT**  
 Use this Total Waist Measurement for selecting a Front/Back Panel Width below. Measure waist at widest circumference in between the chest and the top of the duty belt. Add the desired overlap to the waist measurement to achieve "total waist" measurement.  
 Butt Fit – add 1" to the waist measurement  
 1" Overlap – add 3" to the waist measurement  
 2" Overlap – add 5" to the waist measurement

**WAIST \_\_\_\_\_ + OVERLAP \_\_\_\_\_ = TOTAL WAIST \_\_\_\_\_ ins.**

**3 BACK LENGTH MEASUREMENT**  
 Use this Back Length Measurement for selecting a Back Panel Length below. Identify the bottom edge of the shirt collar. Measure from the bottom edge of the shirt collar to the top of the duty belt. Multiply that measurement by .80 (80%).

**BACK MEASUREMENT \_\_\_\_\_ x .80 = BACK LENGTH \_\_\_\_\_ ins.**

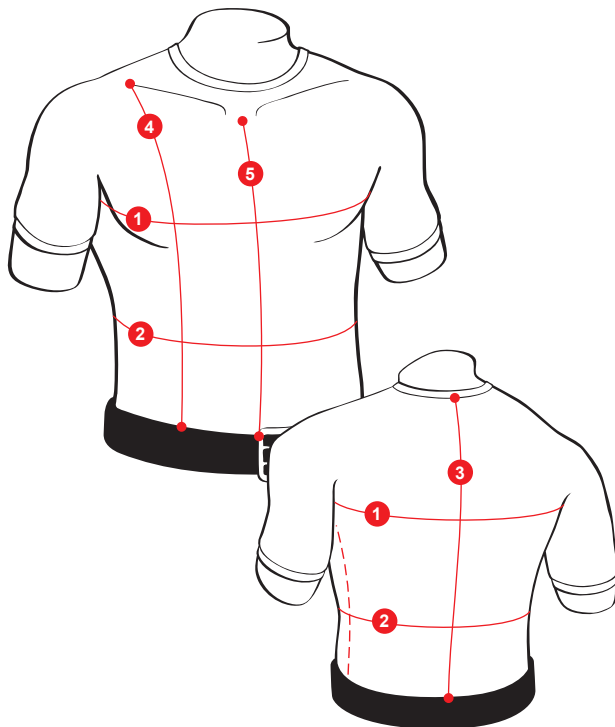
### THE FOLLOWING MEASUREMENTS SHOULD BE TAKEN SEATED

**4 FRONT SIDE LENGTH MEASUREMENT**  
 Use this Front Side Length Measurement for selecting a Front Panel Length below. Use cloth tape. Place tape at top edge of clavicle bone and measure straight down to top edge of duty belt. Subtract 1" from this measurement.

**FRONT SIDE \_\_\_\_\_ - 1" = FRONT SIDE LENGTH \_\_\_\_\_ ins.**

**5 FRONT CENTER LENGTH MEASUREMENT**  
 Identify the clavicle notch. Measure from the base of the clavicle notch to the top of the duty belt. Subtract 1" from this measurement.

**FRONT CENTER \_\_\_\_\_ - 1" = FRONT CENTER LENGTH \_\_\_\_\_ ins.**



### PANEL CONFIGURATION

**SIZES: NOTE:** Front panel must be as wide or wider than back panel to allow for wrap-around coverage.

**FRONT PANEL WIDTHS:** 12 14 17 20 22 25 28 30 35 40 / **FRONT PANEL LENGTHS:** 10 11 12 13 14 15 16 17 18 19 20 21 22 23  
**BACK PANEL WIDTHS:** 12 14 17 20 22 25 28 30 35 40 / **BACK PANEL LENGTHS:** 10 11 12 13 14 15 16 17 18 19 20 21 22 23

**VEST SIZE**  /   /

FRONT PANEL WIDTH      FRONT PANEL LENGTH      BACK PANEL WIDTH      BACK PANEL LENGTH